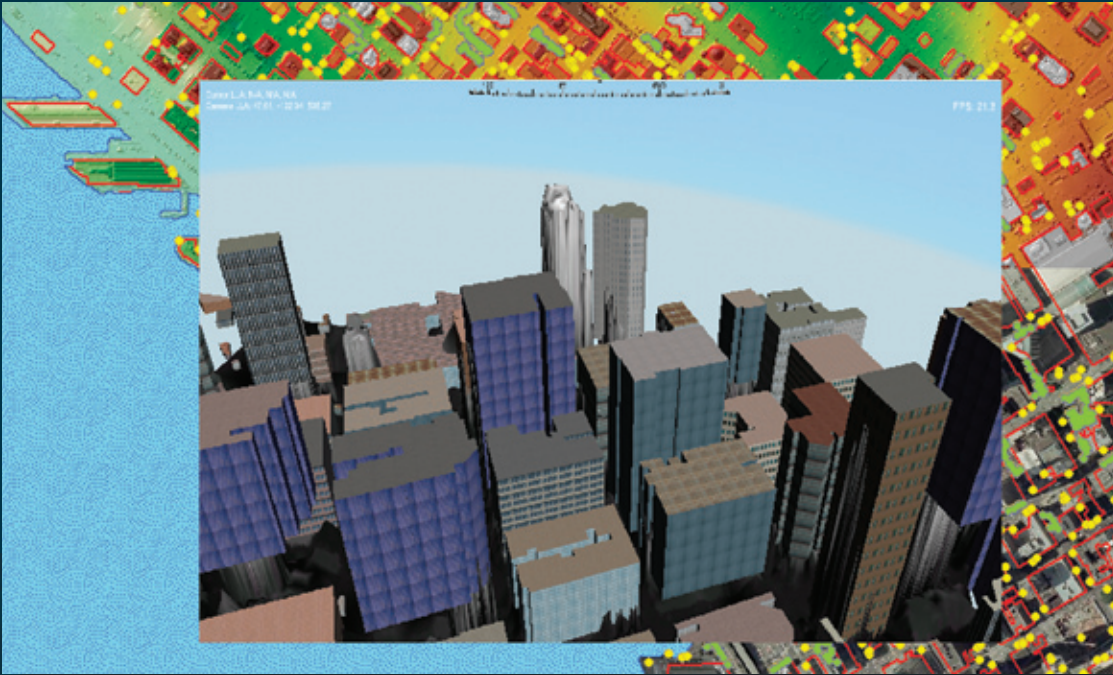


LIDAR ANALYST

TEXTRON Systems

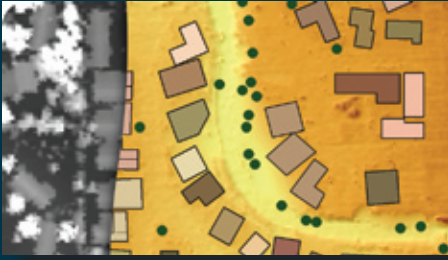


LIDAR Analyst® is a powerful 3D automated feature extraction tool for airborne LIDAR (Light Detection and Ranging) data. LIDAR Analyst radically simplifies the process of extracting 3D bare earth terrain, buildings, trees/forests, and contour line features. By attributing nearly 100% of building and tree features, LIDAR Analyst enables geospatial analysts to capture and exploit 3D data sets within centimeters of sensor accuracy. LIDAR Analyst can ingest data in various formats including LAS, ASCII text, Digital Elevation Models (DEM) or raster, and 3D point shape files. In addition, LIDAR Analyst includes a robust set of tools for editing terrain, editing complex 3D buildings, data conversion tools, and various analysis tools that help analysts maximize the value of LIDAR data.

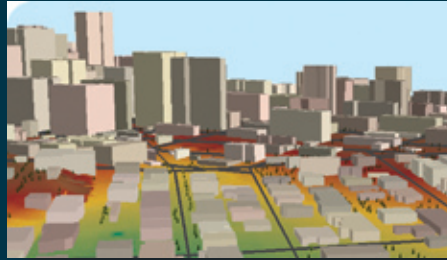
LIDAR Analyst is modular in nature and can be used on its own or in conjunction with Feature Analyst to create an integrated suite of tools which work together to satisfy every aspect of creating, maintaining and analyzing 3D data such as urban models.

LIDAR Analyst works as an extension to ESRI's ArcGIS®, Global Image Viewer®, ERDAS IMAGINE®, and Overwatch's ELT/5500®, and Image Light Table Plus (ILTP) products.

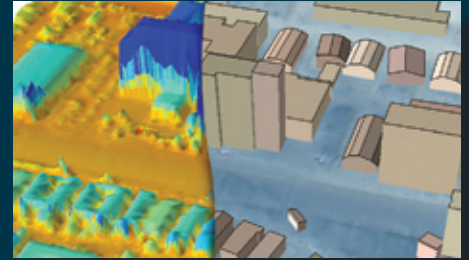
LIDAR ANALYST



LIDAR Analyst overcomes the time consuming nature of manual feature collection by automating the extraction of bare earth, buildings, and trees. Left side is the raw image.



Overwatch's LIDAR Analyst software provides outstanding solutions for 3D feature extraction from LIDAR data.



Software features include tools for extracting bare earth surfaces, filtering small features such as shrubs, editing DEMs, and squaring up buildings, as shown in the above illustration.

LIDAR Analyst provides the following capabilities:

- Importing and processing LIDAR data returns in a variety of data formats including LAS, ASCII text, DEM, MrSID Compressed LAS, or point shape file
- 100% automated 3D feature extraction
- Simple, fast and accurate extraction of bare earth terrain
- Extraction of 3D buildings with complex rooftops
- Extraction of tree points and forest regions
- Extraction of contour lines for depicting elevation
- Terrain Analysis
- Automated attribution for extracted features such as building height, orientation, roof type, stem diameter, crown width, etc.
- Conversion tools for ASCII text and point shape file to LAS format
- Exporting result features to KML file format to display in Google Earth™ and Microsoft Virtual Earth
- Classification of LAS point clouds based on LIDAR Analyst extractions and user settings
- Batch processing
- Advanced 3D editing tools for manipulating vectors and terrain surfaces
- Integration with ESRI's Model Builder

New in LIDAR Analyst

New Terrain Analysis tool for identification of areas that match specified feature and terrain characteristics.

Integration with ESRI's Model Builder provides true end-to-end geoprocessing capabilities.

These commodities, technology or software were exported from the United States in accordance with the Export Administration Regulations. Diversion contrary to U.S. law is prohibited.

LA 08/2010

Overwatch
21660 Ridgetop Circle
Suite 110
Sterling, VA 20166
Phone: (703) 467-2400
Fax: (703) 437-0039

www.overwatch.com

www.overwatch.com

© 2010 Overwatch Systems Ltd. All rights reserved. Overwatch Systems Ltd. is a Textron Systems company.

 **OVERWATCH**