

# IMPACT™

**ANALYZE & DISRUPT CRIMINAL AND TERROR NETWORKS BEFORE THEY STRIKE**

TEXTRON Systems



**2011 WINNER**



**Homeland Security Awards**



Investigators are challenged by changing criminal and terrorist activity, and an ever-increasing quantity of threat data to manage effectively. In order to stay ahead of modern day threats, investigators require sophisticated tools to collect, analyze and manage the data that supports their analysis. Developed in conjunction with law enforcement experts IMPACT (Intelligence Monitoring, Pattern Analysis and Collection Toolkit) meets these needs, providing homeland security and law enforcement investigators with a powerful set of adaptive and scalable data collection, data visualization and pattern analysis capabilities. Applying IMPACT to the investigative process analysts at local, state and federal levels are able to analyze and disrupt criminal and terror networks before they strike.



## A Comprehensive Solution

IMPACT is a proven solution that greatly simplifies analytic investigation, organization, collaboration and contextual understanding of information, in order to create actionable intelligence. IMPACT includes a number of key functional capabilities that comprise the solution's unique benefits, including:

### Intuitive Graphical Interface

IMPACT's graphical display enables users to easily visualize and understand complex information through intuitive charts, maps and diagrams in a variety of presentation methods for quick and accurate decision making.

### Data Discovery and Collection

The data discovery and collection features of IMPACT enable analysts to proactively uncover, analyze and understand the hidden connections, relationships, patterns or trends to "connect the dots" that underlie criminal and terrorist activity.

Features include:

- Integration with law enforcement data sources enables timely access to information needed to perform both local and remote federated searches across each resource.
- Semantic text extraction for automated identification and capture of facts, figures and references from unstructured text documents, emails, and reports.
- Powerful data modeling and predictive analysis capabilities to dynamically relate individuals, events, criminal activity, case files, and other case relevant data.

### Advanced Search

IMPACT provides analysts with advanced search and ingest of vital crime data from across disparate sources. A law enforcement inspired Object Model lies at the heart of the system to support investigative operations. Moving quickly between different data repositories, IMPACT reveals the criminal network behind the statistics without losing the connections and patterns that provide the common thread.

### Case Management

The Case Management Tool enables analysts to easily store and share analyzed information in detailed case files. IMPACT supports three differing case types: information, intelligence, and criminal cases. Cases or information in them can be shared through export to file, export to Microsoft® Word or PowerPoint®, or via web-based view.

### Alert and Area of Interest Management

IMPACT incorporates user-defined alerts (visual and auditory) which automate monitoring and notification of new information, events or changes within designated areas of interest (e.g., country, regions, cities, or specific locations). The Alert Center monitors all noted activity within defined boundaries.

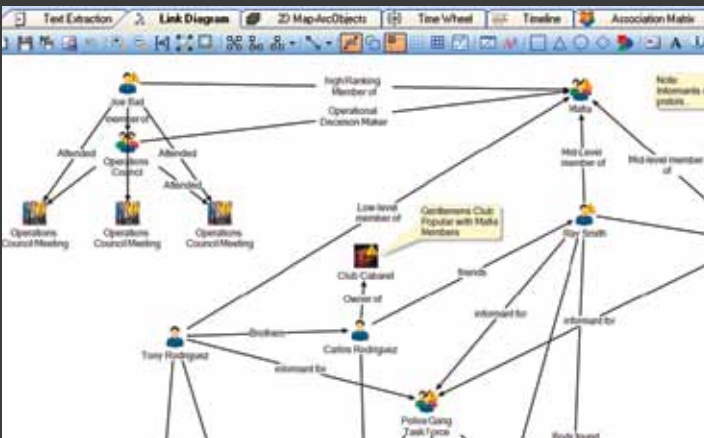


## Visualization and Geospatial Analysis Tools

IMPACT provides a powerful set of analytical and visualization capabilities to help investigative analysts to visualize patterns and to formulate predictive analysis of target information. Capabilities include the following:

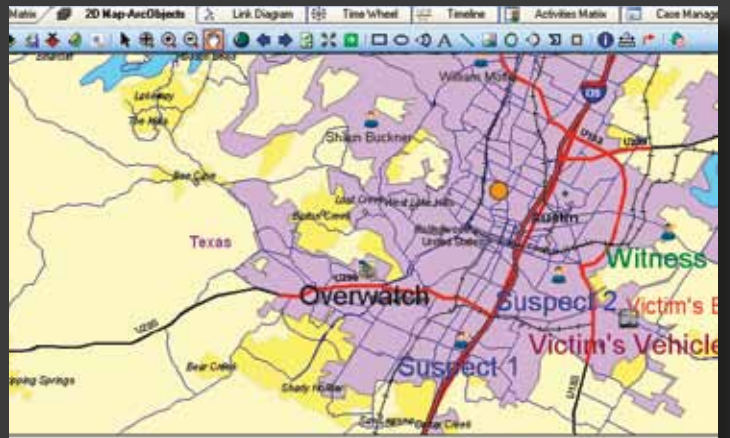
### • Link Analysis

IMPACT provides multiple link analysis and exploration capabilities which enable analysts to easily identify and track associations among individuals, facilities/locations, transactions, events, and other conspicuous activities.



### • Mapping

A comprehensive array of mapping capabilities enables users to easily organize and display data accurately, portraying pending threats, capabilities, and intentions. Analysts can easily overlay information on Esri® Map Objects or with Google Earth so that the information can be viewed in a specific geospatial context to support the ongoing investigative process.



### • Temporal Analysis

Time wheel and time line analysis tools enable analysts to visually identify, observe, and analyze time and date patterns for activities associated with their investigations. Once the pattern has been identified on a time wheel or time line, then an investigator can predict, with some confidence, when the next activity will occur or when and where the suspect will be next.

### 28 CFR Part 23 Compliant

IMPACT is fully 28 CFR Part 23 Compliant helping to safeguard the constitutional and privacy rights of individuals.



IMPACT™ investigative analysis software has been named "Best Intelligence Data Fusion and Collaborative Analysis Solution" by Government Security News (GSN) as part of the publication's annual Homeland Security Awards program.

IMPACT is unique in its ability to support complex analysis needs faced by law enforcement and homeland security investigators, criminal analysts, terrorism task force teams and fusion centers (joint criminal and terrorism prevention and response centers).

Overwatch  
PO Box 91269  
Austin, TX 78709-1269  
512-358-2600