



MEDINA WIRELESS SURVEILLANCE

SOPHISTICATED WIRELESS TELECOMMUNICATIONS-BASED UNDERSTANDING OF NETWORK TRAFFIC

TEXTRON Systems



MEDINA WIRELESS SURVEILLANCE

ADVANCED SITUATIONAL ANALYSIS AND UNDERSTANDING OF WIRELESS COMMUNICATION NETWORKS



Air



Land



Sea



Cyber



Security

Medina Wireless Surveillance 2.0v3 (MWS) is a software product that provides sophisticated wireless telecommunications-based understanding by mining and analyzing commercial wireless communications network traffic and events. MWS software employs an easy-to-use Windows® based system that enables analysts to aggregate, analyze and relate call and non-call events through a powerful relational database. Once data sets are established, they can be mined and analyzed using filters to extract relevant data of interest and then be rendered into a rich set of visualization tools to interpret and act upon.

WHY MWS?

- Easy to use Windows-based system
- Integration of tools provides unique and effective collaboration
- Conventional and non-conventional viewers for integrated database management
- Viper collaborative framework includes Preferences, Modes, Case Management and Search Tools
- Emitter activity viewers supports both non-conventional and conventional signal collection inputs from receivers for viewing and exploitation
- Sensor network supports tasking, monitoring, and dynamic discovery of sensors across the network
- Provides direction finding and geo-location capability
- Audio processing supports monitoring, gist, and transcription
- Includes visual tools and analysis displays: Link Diagram, Time Wheel, Association Matrix and Activities Matrix
- Automatically maps and characterizes the surrounding RF environment
- Correlates organic data with other external data sources
- Mapping tool supports common formats

DESIGNED FOR INTEGRATION WITH COMMERCIAL SENSORS

Medina Wireless Surveillance software is designed to easily integrate with various commercial sensors to provide analysis of commercial telecommunications.



TEXT EXTRACTION and DATA MINING

Documents and log files are searched, parsed and mined to show information in the viewers before adding data to the database. This allows the analyst to include a wide variety of information to the analysis from unstructured data and external data sources.



ENVIRONMENTAL SURVEY

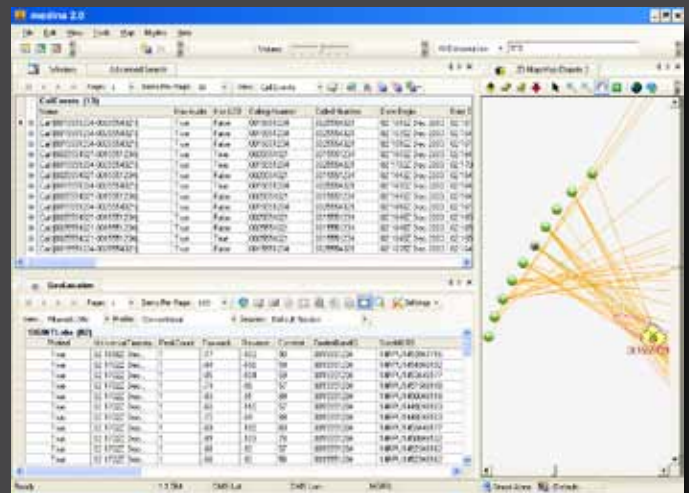
MWS and associated receivers will automatically detect the elements of the surrounding radio frequency environment. Location information as well as multimedia information can be associated with each element. Multiple surveys can be merged to form an overall picture of the environment.

INTEGRATED VISUAL ANALYSIS TOOLS AND DISPLAYS

Data can be shown in link chart, timewheel, histogram, or association matrix formats to show patterns of behavior, including communications, and non-obvious relationships in the data.

INTEGRATED DF AND GEOLOCATION CAPABILITY

Location data is used to determine directional proximity to a particular node-of-interest. The user can filter the directional data, which refines the resulting Elliptical Error of Probability based on various propagation characteristics of the node-of-interest. This information is stored in the database and can be plotted to the map.



MULTIPLE SENSOR COLLABORATION

Data gathering includes environmental survey, non-conventional, and conventional information. The information is passed from low-level collectors to higher-level entities facilitating an updated operational environment to include a networked, on the move, direction finding capability.



MEDINA WIRELESS SURVEILLANCE



System Compatibility

Medina Wireless Surveillance software is compatible with Windows®XP and Windows 7 Operating systems. Server versions of the software are compatible with Windows Server® 2003 and 2008R2. Please contact Overwatch for questions about NSAnet availability and certifications.

Overwatch Systems, Ltd.
PO Box 91269
Austin, TX 78709-1269

Tel: 512-358-2600
Ask to speak with Business
Development

www.overwatch.com

MW5 20110926

© 2011 Overwatch Systems, Ltd. Overwatch is a strategic business of Textron Systems Advanced Systems, an operating unit of Textron Systems, a Textron Inc. (NYSE: TXT) company. Overwatch and Medina are trademarks of Overwatch Systems, Ltd. Windows and Windows Server are registered trademarks of Microsoft Corporation. Photography courtesy of the DoD.

Medina Wireless Surveillance software is controlled on the USML and whose export or re-export is subject to the U.S. International Traffic in Arms Regulations (22 CFR 120-130) and will require prior written approval from the U.S. Department of State.

