

 **SCOUT™**

 **SCOUT™**

Services Cryptologic Operations Universal Toolset

TEXTRON Systems

 **OVERWATCH**
TEXTRON Systems

P.O. Box 91269
Austin, TX 78709 USA
Ph: 512.358-2600
www.overwatch.com



SCOUT OW20110929

© 2011 Overwatch Systems, Ltd. Overwatch is a strategic business of Textron Systems Advanced Systems, an operating unit of Textron Systems, a Textron Inc. (NYSE: TXT) company. Overwatch and SCOUT are trademarks of Overwatch Systems, Ltd. Windows and Windows Server are trademarks of Microsoft Corporation. The SCOUT software is controlled on the USML and whose export or re-export is subject to the U.S. International Traffic in Arms Regulations (22 CFR 120-130) and will require prior written approval from the U.S. Department of State.

 **OVERWATCH®**

SCOUT is a client server based SIGINT system which provides an integrated set of collection, processing and analysis tools for Traditional and Non-Traditional signal environments.

The SCOUT system incorporates Overwatch's proven framework of integrated applications and tools for Intelligence analysis and reporting. It is uniquely designed to reduce the number of software interfaces the user is exposed to, allowing more time and opportunity to analyze the collected information.

An optional VIPER Software Development Kit (SDK) is available to empower organizations to create basic client adapters and unique data drivers. The SDK provides the ability to extend capabilities of the SCOUT system including enhancements to elements such as the SIGINT specific Object Model, Geo-Location, Gist and Transcription and Messaging.

SCOUT enabled products are available today for specific missions. SCOUT workstations are compatible with Windows® XP and Windows 7 Operating systems. SCOUT Servers are compatible with Windows Server® 2003 and 2008R2. Please contact Overwatch for questions about NSAnet availability and certifications.

Key Features



Temporal Analysis Tools



Environmental Survey



Sensor Network Management



Standard Data Export Formats



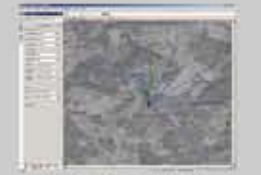
Call Chaining



Automated Target Package



Case Management



LOB Resolution

The SCOUT system is comprised of numerous modules that can be combined to compose a core SIGINT capability that can operate in a Windows or Service Oriented Architecture. Components of the system can be combined to provide uniquely scalable capabilities for processing, analyzing, and visualizing SIGINT for a variety of missions and roles.

Plug-in's may be produced or integrated to solve "niche" data processing problems needed to provide refined data to operators and analysts alike. SCOUT system plug-in's are available as additional components to the baseline system based on individual customer needs. By using the SCOUT components AXIS, Gist & Transcription Tool, Medina Wireless Surveillance, and integrating NEXIDIA's "NEXMiner" product, hours of audio can be efficiently filtered and searched by keyword or context and subsequently distilled into manageable sets of key audio events.

Plug-in's are available via CD-ROM, DVD, or other suitable media, as well as available for download via Overwatch Systems' web support site on SIPRNet and JWICS.



Real-Time Processing



SCOUT Collector

- Real Time Processing
- LOB Resolution
- High Priority Targeting
- Reporting
- Data Sharing
- Generic Sensor Network
- Environmental Surveys
- Audio Management
- GIST & Transcription