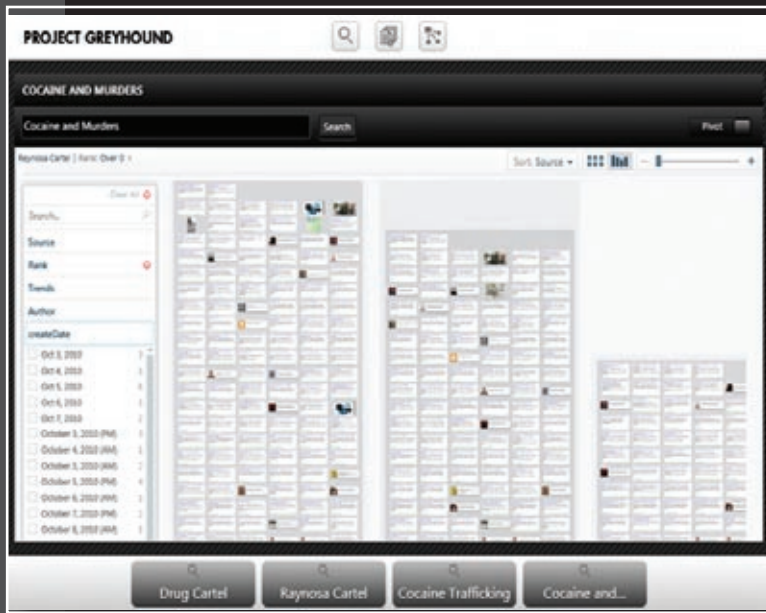


RESULTS

SEARCH RESULT VISUALIZATION

Upon executing a search, the unique visualization capabilities of Project Greyhound present the analyst with a collection of results (documents, blogs, Twitter content, web pages, Wiki pages, images, database results, multimedia, etc.). The collected results may be filtered, organized and visually presented to easily identify relevant facts and information. By quickly identifying facts and relationships that exist across the collection of returned keyword or phrase-based search results, analysts are able to quickly uncover hidden patterns that provide new insights for their investigations.



QUICKLY SCAN & VET RESEARCH RESULTS

Project Greyhound contains processing algorithms which are applied to search results in order to visually highlight key words or phrases that are relevant to the search criteria. These visual cues further enable users to quickly scan and synthesize information in support of down-stream analysis.



PROJECT GREYHOUND

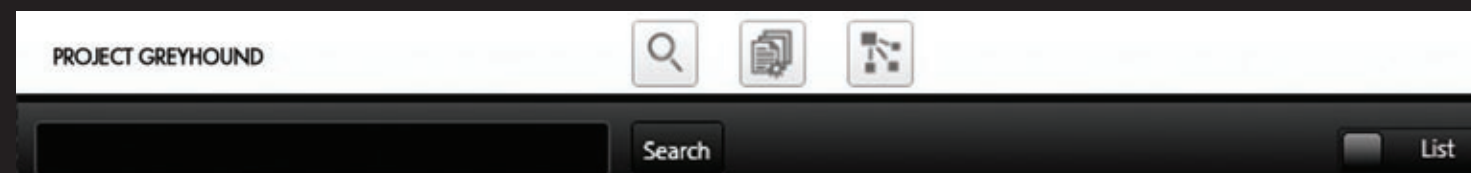
PROJECT GREYHOUND

TEXTRON Systems

Overwatch
P.O. Box 91269
Austin, TX 78709-1269
512-358-2600

Images courtesy of DoD

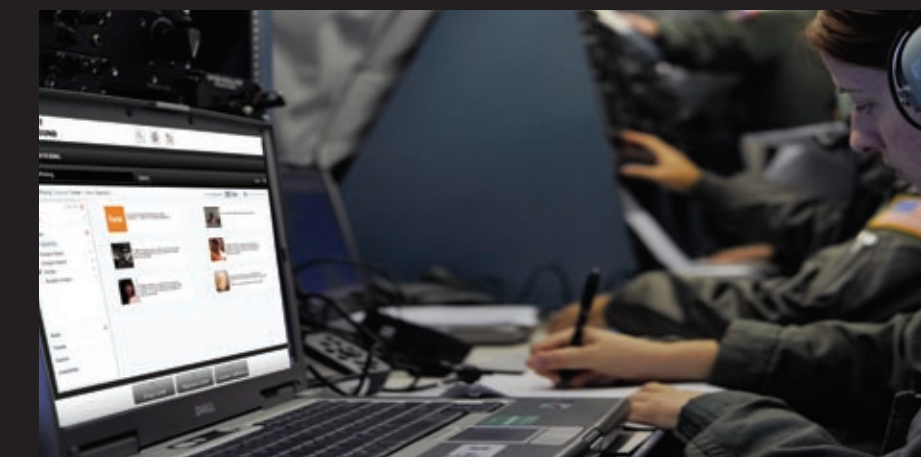
PROJECT GREYHOUND



Project Greyhound is Overwatch's next-generation research and collaboration capability being developed for the intelligence and research communities. Project Greyhound enables rapid search, organization and dissemination of intelligence information gathered simultaneously from across multiple, open and secure

intelligence sources. Leveraging Project Greyhound's intuitive array of analytical tools, analysts are able to easily expand the scope and breadth of their intelligence queries and organize results well beyond the boundaries of structured databases, reports and documents.

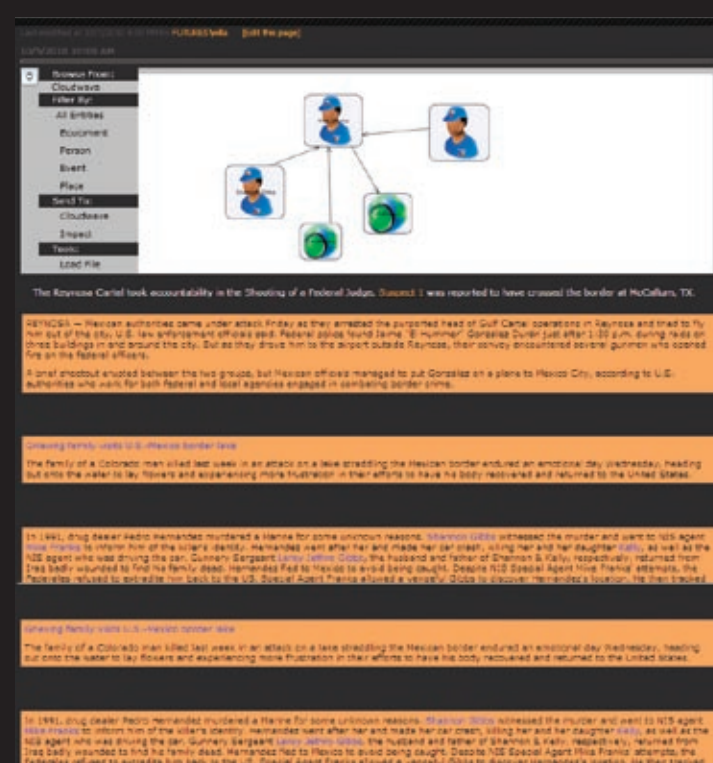
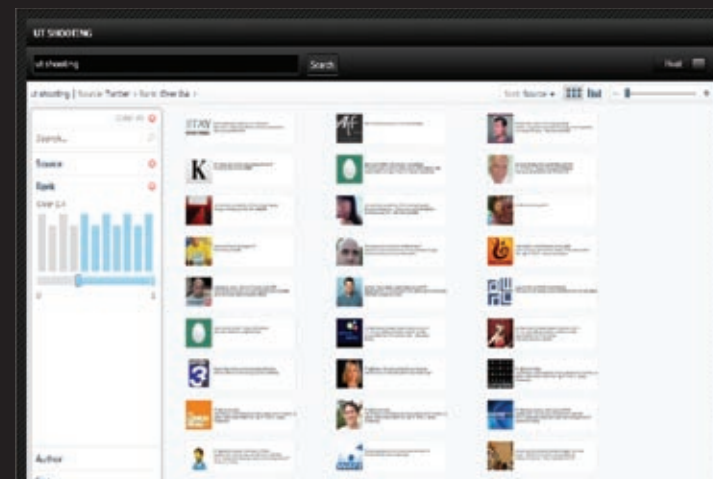
ENABLING RAPID SEARCH, FILTERING AND ORGANIZATION



GOOGLE
BING
TWITTER
FACEBOOK
SIPRNet
DCGS
TiGR
CIDNE
JWICS

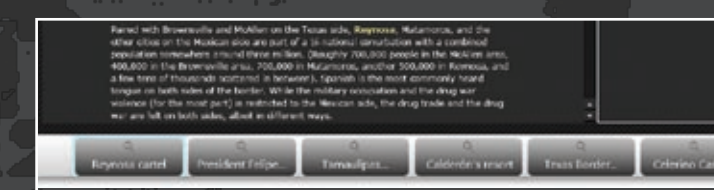
INFORMATION ACQUISITION FROM MULTIPLE SOURCES

By applying Project Greyhound to their investigative processes, analysts are able to perform simultaneous searches across numerous web services (e.g., Google, Bing, Twitter, Facebook and more). In addition, Project Greyhound performs simultaneous federated searches of structured data via file shares, data stores, SharePoint sites and other resources available on existing operational networks.



DYNAMIC REPORT GENERATION

Project Greyhound users may dynamically build Wiki page reports for use in downstream analyses and to support collaborative research. This is accomplished by using intuitive point and click capabilities to move relevant information (paragraphs, phrases, photos, graphics and other data) from individual documents to the Project Greyhound workspace.



COMPREHENSIVE SEARCH HISTORY

As searches are performed, Project Greyhound dynamically builds a comprehensive search history that encompasses the words, ideas, tasks, or other items used by analysts to complete each search. The search history effectively documents and validates the processes used to derive results for all searches. Easily accessible tabs for each search allow users to quickly navigate between search threads and associated investigative links. The search history is also useful for communicating and sharing all aspects of an analysis session in support of collaborative research.

RESEARCH SHARING AND COLLABORATION

A document management center is a key component to providing viable collaboration and sharing of relevant information. Secure sharing and collaboration is enabled through seamless integration of Project Greyhound with SharePoint and other document management services.

ALERT SERVICES

Through search alert services, users are able to receive notifications when information is added to or changed within the document repository or Wiki results pages created through Project Greyhound.

filmstrip

url shooting

filmstrip