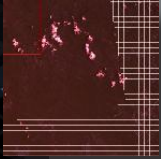




REMOTEVIEW™

WHAT'S NEW IN REMOTEVIEW 3.2?



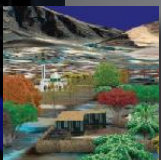
ACCURACY INDICATORS

Ensure accuracy of positioning data through the Geo Confidence indicator and Elevation Coverage overlay.



LIDAR DATA

Visualize LIDAR point cloud data in 2D (or in 3D with 3D Pro) and use it as an elevation source.



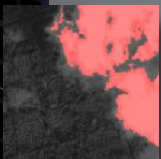
3D VISUALIZATION

Create detailed 3D scenes through the enhanced 3D Pro extension that includes new tools and a large 3D model library.



BOOKMARKING VIEWS

Bookmark a snapshot of the current view for opening the same configuration at a later time.



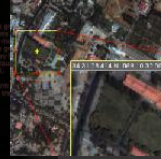
THRESHOLD MASK

Mask unnecessary regions, such as cloud coverage, using pixel threshold values.



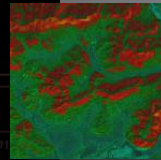
DYNAMIC RESOLUTION ROAM

Enhanced pan and roam performance for both single and mosaiced imagery via the new Dynamic Resolution Roam (DRR) capability.



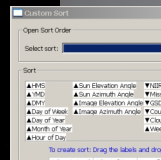
IMPROVED MAGNIFIER

Magnify a Region of Interest (ROI) without obscuring the original target image.



SLOPE TOOL

Conduct mobility analysis for motor convoys by visualizing the slope severity.



CUSTOM FOLDER SORTING

Sort folder contents via search criteria such as time, angles, and image metadata.



LANDING ZONE TOOL

Identify potential aerial vehicle landing sites using the Landing Zone Tool.



IMPROVED PUBLISHING

Publish georeferenced imagery to Google Earth or PDF; publish image as a PowerPoint slide.



OTHER ENHANCEMENTS

RRDS location configuration, WCS support, enhanced point labeling, count tag customization, orientation aids, and save user activity to AVI movie files.